

# COMPLETE DENTURE WITH LOCATOR ATTACHMENTS ON A BAR

A Complete Denture with Locator Attachments on a Bar is an appliance that replaces all of the teeth in one jaw. It is not cemented in the mouth and can be taken out. A milled bar or cast metal bar is connected to 4 dental implants that are placed in the jawbone. Locator attachments are placed in the Complete Denture and connect the denture to the bar.

## Frequently Asked Questions

### 1. **What material is in a Complete Denture with Locator Attachments on a Bar?**

The base of a complete denture is made of pink acrylic. If the complete denture has a metal substructure, the substructure is made of a very strong metal alloy. The teeth are made of tooth colored acrylic or porcelain. The bar may be milled titanium or cast metal. The locator attachments are plastic. The implants are titanium.



### 2. **What are the benefits of a Complete Denture with Locator Attachments on a Bar?**

A complete denture with locator attachments on a bar is very stable. It greatly improves retention, stability and chewing ability over a traditional complete denture with or without locator attachments. Patients who have a dry mouth and/or fragile tissue may have difficulty with retention and comfort of a traditional complete denture and benefit from locator attachments on a bar. Lip support is better compared to an implant retained fixed restoration. A removable appliance is more easily repaired. Oral hygiene is also easier. A milled or cast metal bar and locator attachments allow an upper complete denture to be made without covering the roof of the mouth. The angulation of the implants is not an issue.



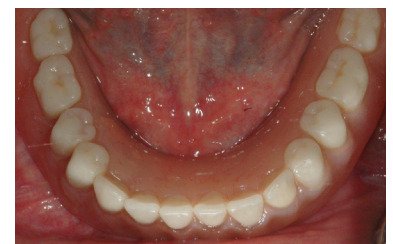
### 3. **What are the risks of a Complete Denture with Locator Attachments on a Bar?**

An implant may fail and need to be removed. If one implant fails, the entire bar may fail, depending on the number and location of implants in the mouth. More space is needed to accommodate the bar and attachments than with other types of dentures. The acrylic base of the denture may fracture, especially if it does not contain a metal substructure.



### 4. **What are the alternatives to a Complete Denture with Locator Attachments on a Bar?**

- A traditional complete denture
- A complete denture with a milled bar attachment
- A complete denture with locator attachments
- Crowns or bridges supported by dental implants
- Leave your mouth as it is



### 5. **How can an existing bite affect a Complete Denture with Locator Attachments on a Bar?**

Uneven or excessive bite forces may cause premature wear of denture teeth. Denture teeth may fracture or become loose from the denture. The denture base can also fracture. Unmanaged bite issues can also cause implants to loosen within the bone and break. Broken or loose implants must be surgically removed.

### 6. **Are there any post-treatment limitations once I have a Complete Denture with Locator Attachments on a Bar?**

To keep the tissue under the appliance healthy and to prolong the life of the locator attachments, your denture should be left out of your mouth during sleep. The teeth in the denture are not as strong as your natural teeth and you will not be able to chew as heavily on them. The appliance will tend to get food trapped underneath it and you may have to remove and clean it after eating.



Restores smile and function